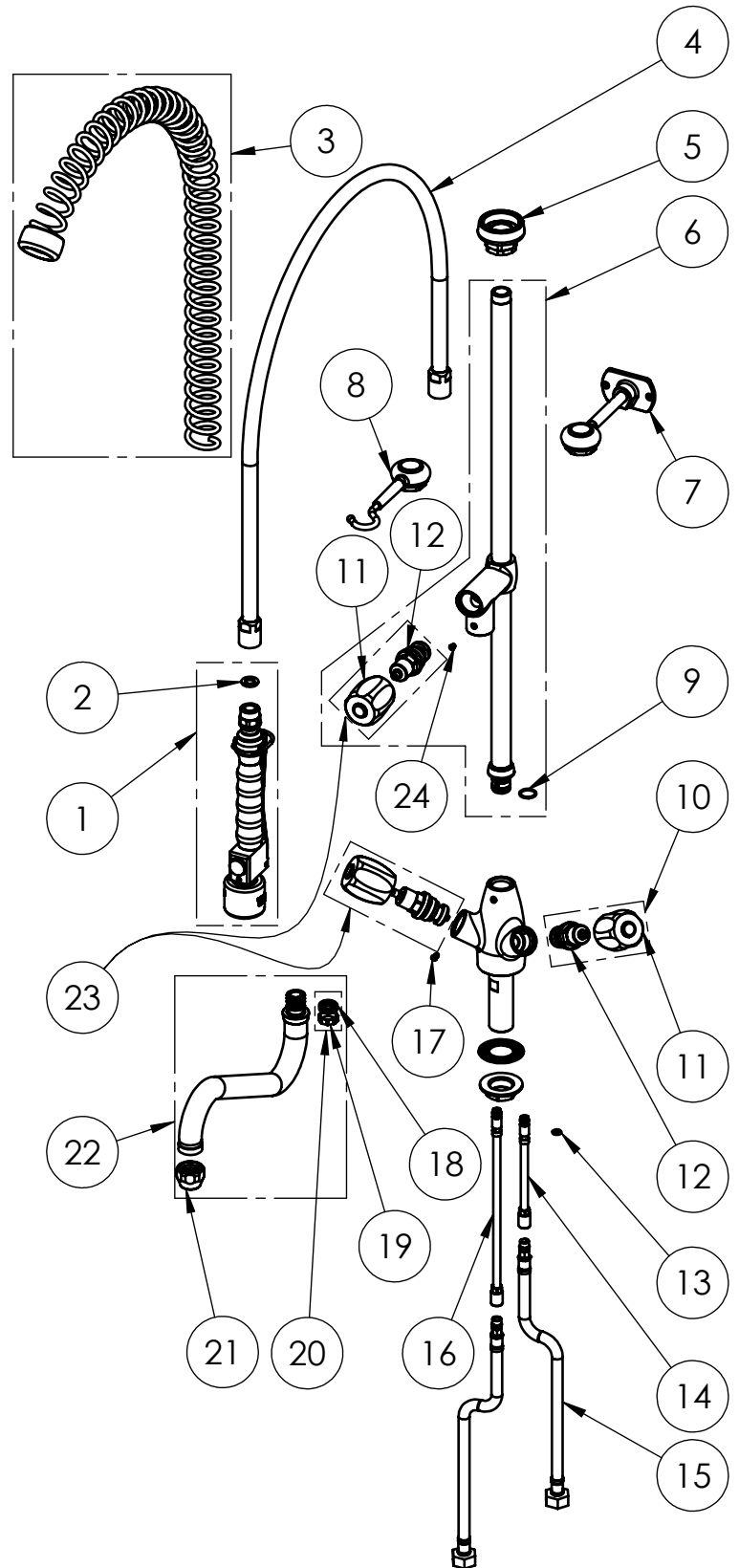


# EXPLOSIONSZEICHNUNG



KBS Gastrotechnik GmbH – Schoßbergstraße 26 – 65201 Wiesbaden

ITEM NO.	SALES NO.	DESCRIPTION
1	P591	SPRAY VALVE "NEW Low-Flow" BLACK
2	P074	FLAT GASKET 1/2" Ø18,5x11 sp.2mm
3	P005	OVERHEAD SPRING "GREY"
4	P004	100cm Ø17 F1/2"xF1/2" FLEXIBLE HOSE
5	P007	SPRING CHROMED SUPPORT
6	P217/11	650mm G1/2" RISER W.ADD ON TAP,HANDLE, HEADWORK AND O-RING
7	P034	115mm WALL BRACKETCHROMED
8	P035	SPRAY VALVE CHROMED SUPPORT
9	P076	O-RING 2062 (Ø15.6x1.78), EPDM 70 PEROX
10	V011/B	COMPLETE HANDLE W.BLUE CODED INDEX +HEADWORK KIT
11	H001/color	"EUROP" HANDLE W. COLOR CODED INDEX (specify the color B or R)
12	V010	3/4" HEADWORK
13	P158	O-RING 106 (Ø6.75x1.78), EPDM 70
14	P616	EXTENSION COPPER PIPE L.140mm w.O-RING
15	F202	L.35cm Flex S.S. Hose Ø12-DN8 Female G1/2" W. BACKFLOW PREV.
16	P618	EXTENSION COPPER PIPE L.250mm w.O-RING
17	P241	SPOUT SCREW (Long)
18	P072	O-Ring 119 (Ø 15,08 x 2,62mm) EPDM 70
19	P592	SWIVEL SLEEVE
20	P613	#2 OR+#1 SWIVEL SLEEVE KIT FOR FAUCET/OUTLET
21	P014	STREAM REGULATOR OUTLET (Ø25 SPOUT)
22	C0S3	SWING NOZZLE Ø25x250 h.60
23	V011/R	COMPLETE HANDLE W.RED CODED INDEX +HEADWORK KIT
24	P236	SPOUT SCREW (short)



TITLE / DESCRIZIONE  
Single hole, mixing temperature, deck mount Pre-Rinse Unit with riser add-on faucet with 250mm swivel nozzle (Ø 25mm). 80mm-long mounting shank, G1/2" female inlets with check valves, G3/4" high flow compression headworks, riser tube - stainless steel, brass, chrome plated. 4L/min KLARCO Low-Flow spray valve.

This drawing contains proprietary information which is the property of KLARCO S.R.L. without whose written permission it may not be copied, shown or handed to a third party or otherwise used

Questo disegno contiene informazioni di proprietà di KLARCO S.R.L. e senza la sua autorizzazione scritta non può essere copiato, mostrato o ceduto a terzi o in qualsiasi altro modo usato

DRN / DIS	CHD / VER	APPR
SCALE / SCALA 1:8	DATE / DATA 24/02/2020	SHEET / PAG 2 of 2
NUMBER / CODICE DIS.	MODEL / PRODOTTO 3E.2103.4L.11	A4V